



MOVE INN ESTATES

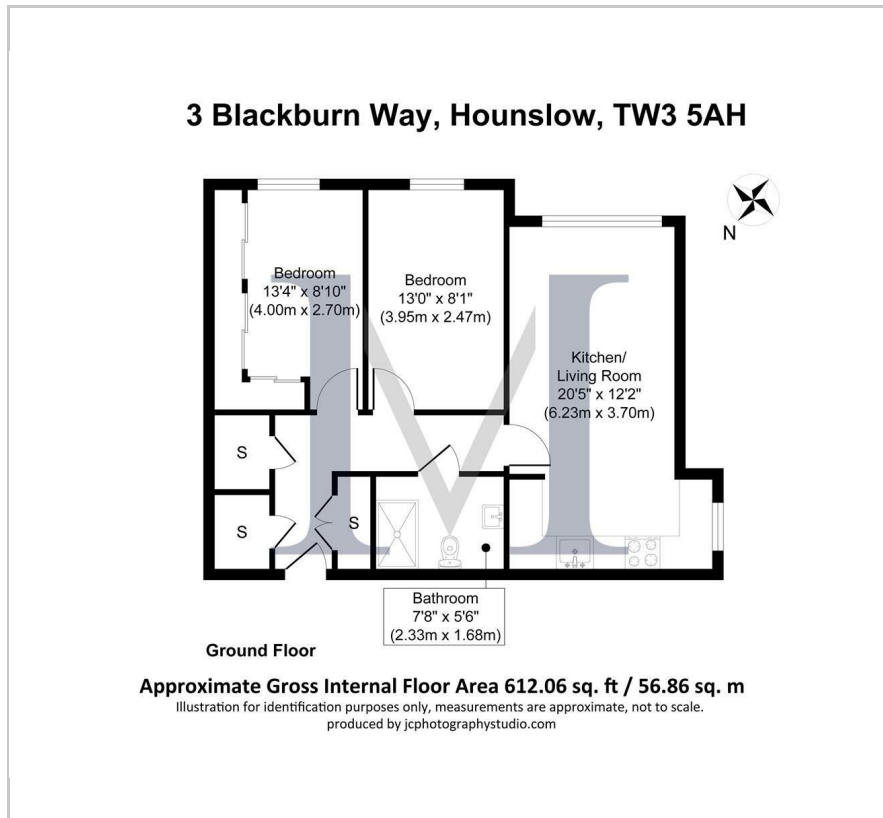
MAKING THE RIGHT MOVE



Blackburn Way
Hounslow, TW4 5AH
Price Guide £300,000



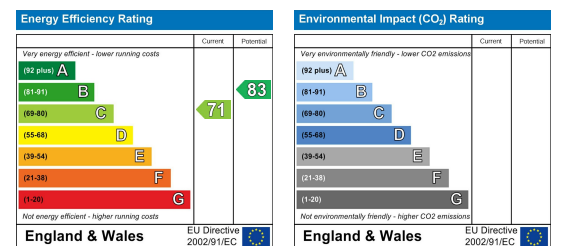
Floor Plan



Area Map



Energy Efficiency Graph



Viewing

Please contact our Move Inn Estates - Sales Office on 0208 574 4966 if you wish to arrange a viewing appointment for this property or require further information.

- Two bedrooms
- Long lease
- Excellent condition
- Ground floor
- Parking available
- Good location



Move Inn Estates bring to the market in excellent condition throughout, this spacious two double bedroom ground floor apartment located in the ever-popular Blackburn Way, a modern development moments away from the green open spaces of Hounslow Heath, varied local amenities, Hounslow High Street and transport links to central London and Heathrow Airport.

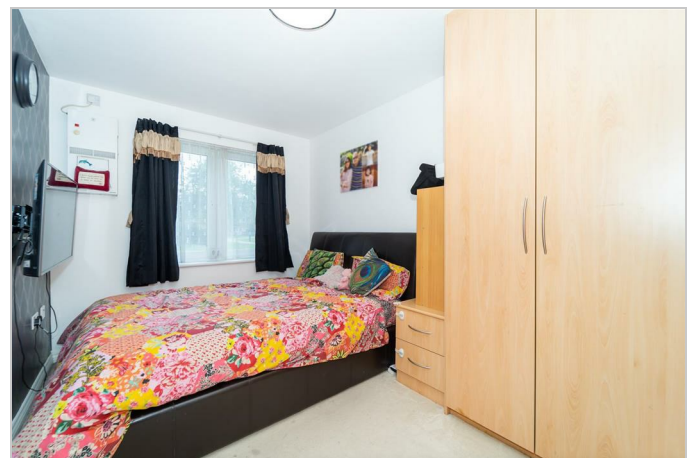
The accommodation comprises a spacious kitchen combined with an open-plan lounge, a family bathroom and two good size bedrooms. Further benefits include long leasehold, double glazing, allocated parking, entry phone system and a location which falls within the catchment area for many highly rated local schools.

Property Details:

Lease Remaining - 186 Years left
Service Charge - £101.00PCM (including ground rent)
Council tax band - C - £158.00PCM

Situated within a stones throw from the various local amenities shops and restaurants and many outstanding schools. Transport links to Heathrow, M4, M25 and M40.

Viewings advised.



These particulars, whilst believed to be accurate are set out as a general outline only for guidance and do not constitute any part of an offer or contract. Intending purchasers should not rely on them as statements of representation of fact, but must satisfy themselves by inspection or otherwise as to their accuracy. No person in this firm's employment has the authority to make or give any representation or warranty in respect of the property.